



GMT MONTHLY MEMBERSHIP PROGRESS REPORT

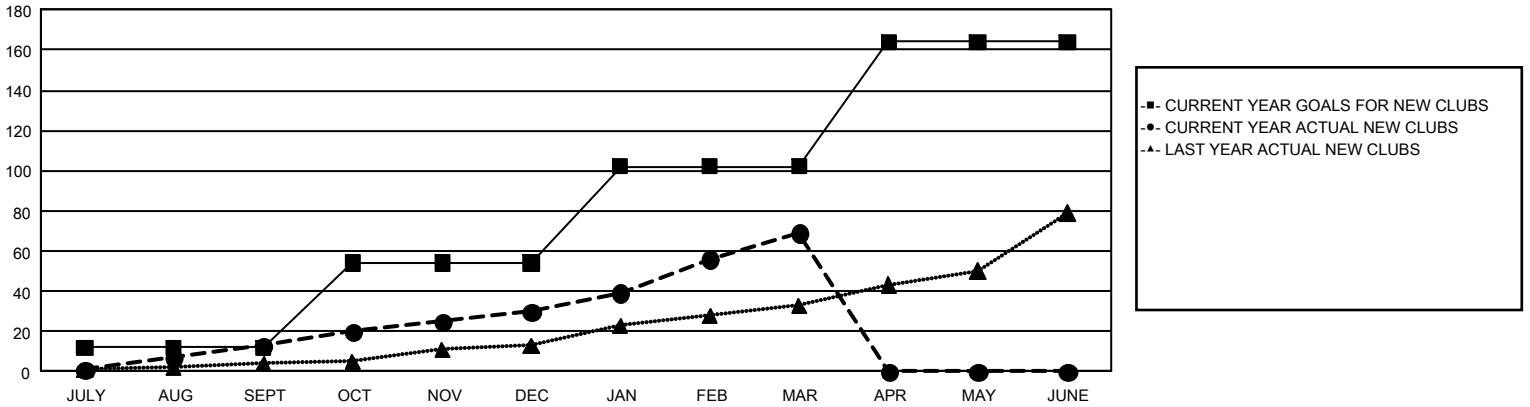
GAT Constitutional Area 4

Results as of: 3/31/2024

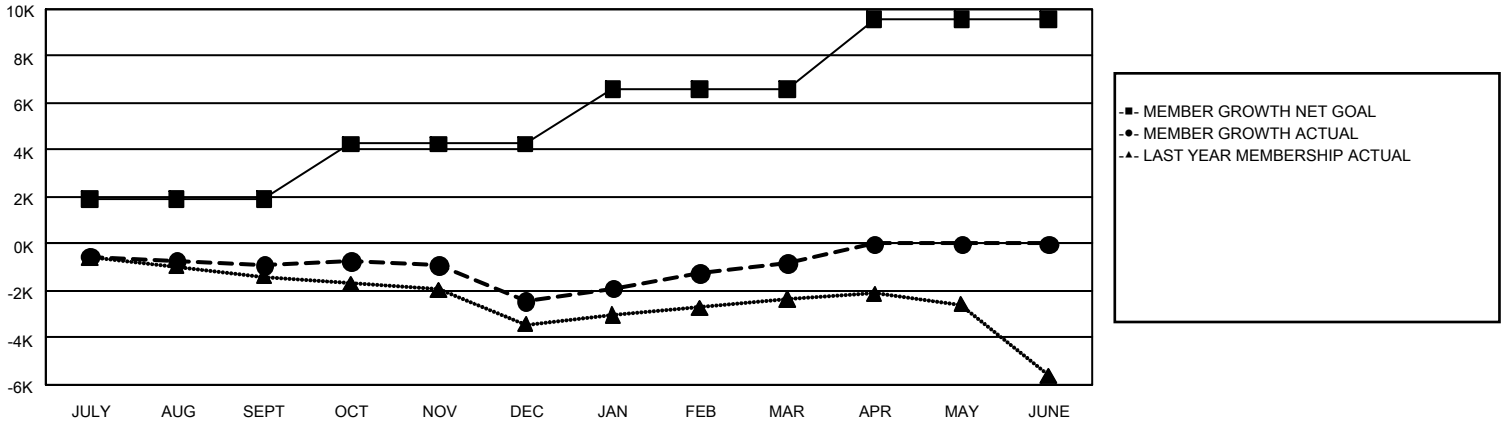
REPORT DOES NOT INCLUDE CLUBS IN UNDISTRICTED AREAS.

Clubs				Members			
RESULTS FOR 2023-2024				RESULTS FOR 2023-2024			
QUARTER	NEW CLUB GOAL	NEW CLUBS	DROPPED CLUBS	QUARTER	MEMBER GROWTH NET GOAL	MEMBER GROWTH ACTUAL	DROPPED MEMBERS ACTUAL (including transfers)
JULY/AUG/SEPT	12	13	56	JULY/AUG/SEPT	1,904	3,462	3,882
OCT/NOV/DEC	42	17	44	OCT/NOV/DEC	2,360	4,279	5,372
JAN/FEB/MAR	48	39	25	JAN/FEB/MAR	2,330	5,665	3,576
APR/MAY/JUNE	62	0	0	APR/MAY/JUNE	2,988	0	0

GOALS AND ACTUAL NEW CLUBS CUMULATIVE



GOALS AND ACTUAL MEMBERS CUMULATIVE



DROPPED CLUBS: 125	4,565 CLUBS OF 8,925 ADDED 1 OR MORE NEW MEMBERS	GENDER DISTRIBUTION MALE 164,968 (74.29%) FEMALE 57,048 (25.69%)
<u>DROPPED MEMBERS</u> DECEASED 1,769 CLUB CANCELLED 529 OTHER 10,528 <hr/> TOTAL 12,826	CLICK HERE FOR CUMULATIVE MEMBERSHIP DATA	TOTAL FAMILY UNIT MEMBERS 11,205 FAMILY MEMBERS PAYING HALF DUES 5,751